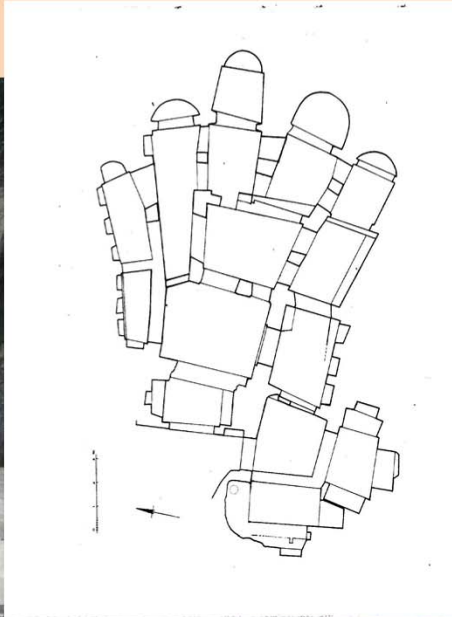


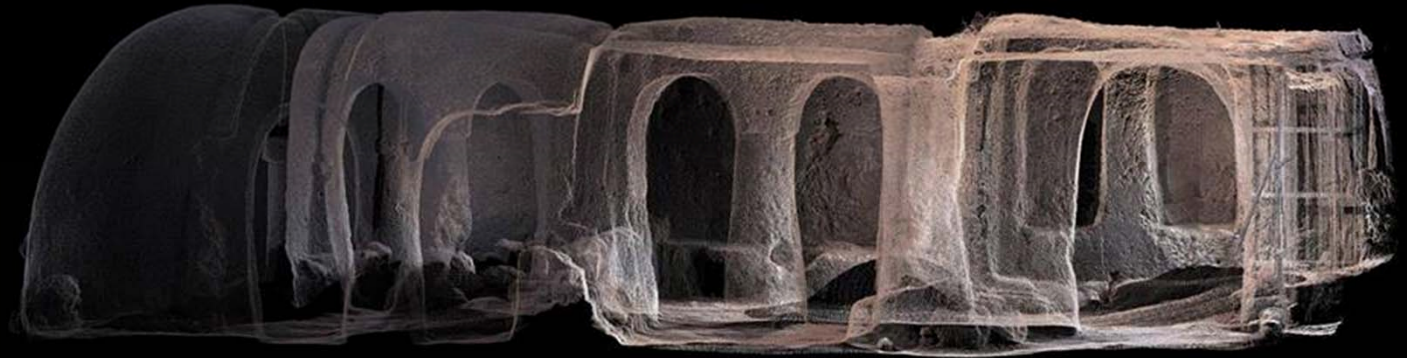
# Per la salvaguardia delle chiese ed insediamenti rupestri.



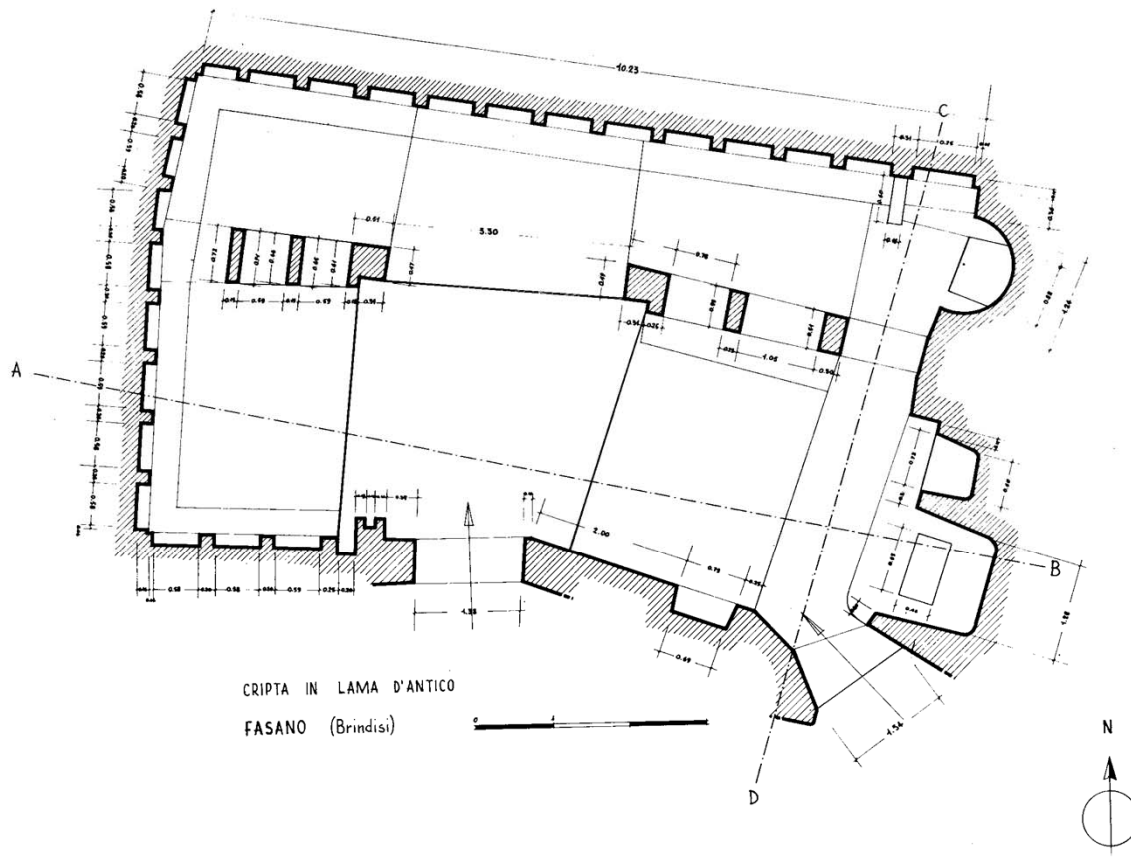
# Santa Candida di Bari.

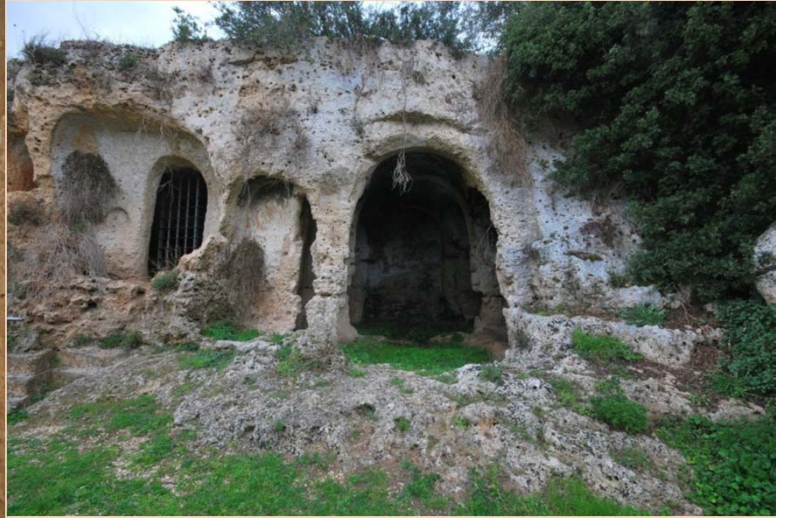




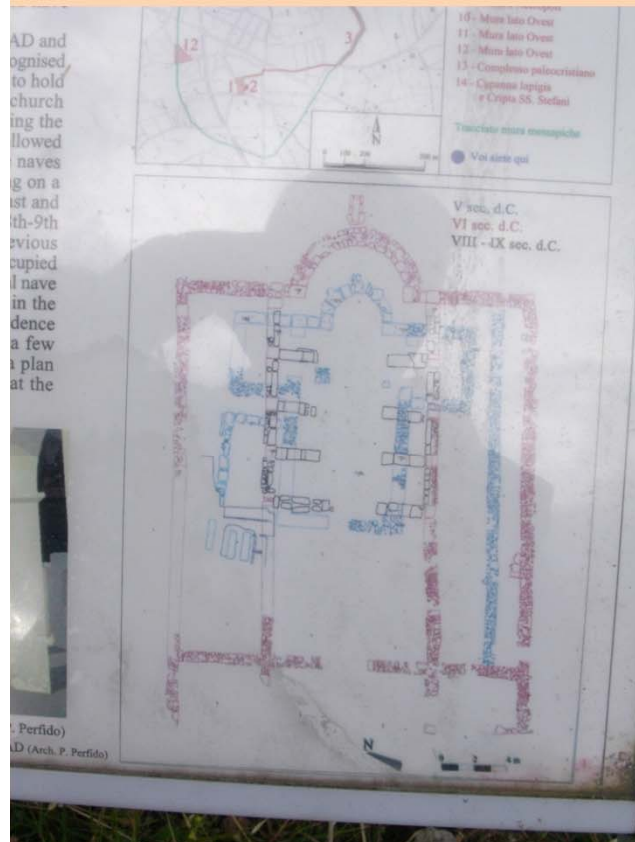


# Lama d'Antico a Fasano.





# Vaste.









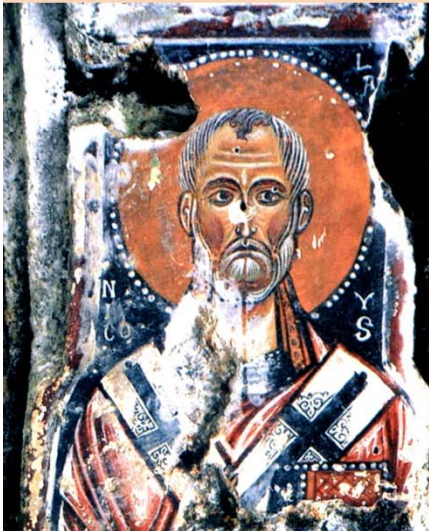
# Chiese con templon.





MASSAFRA - Cripta di San Simine

# Il patrimonio decorativo: una pinacoteca abbandonata.



# Peccato originale di Matera.





# SS. Cristina e Marina a Carpignano.

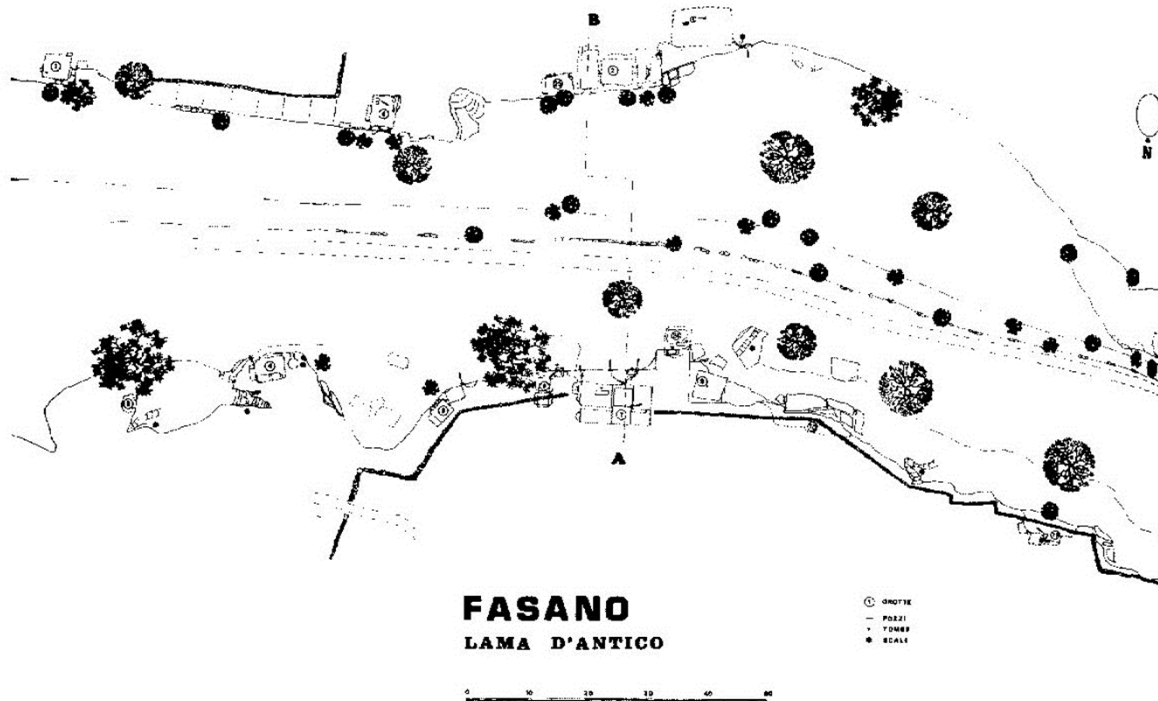




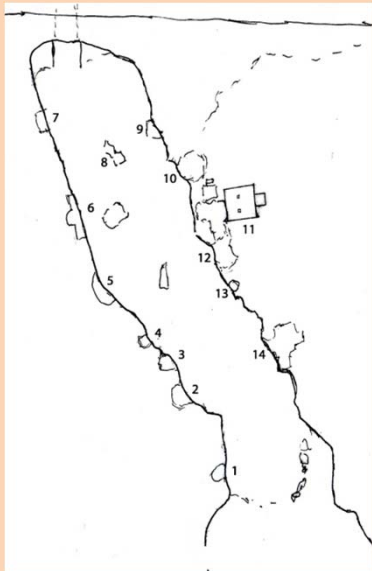




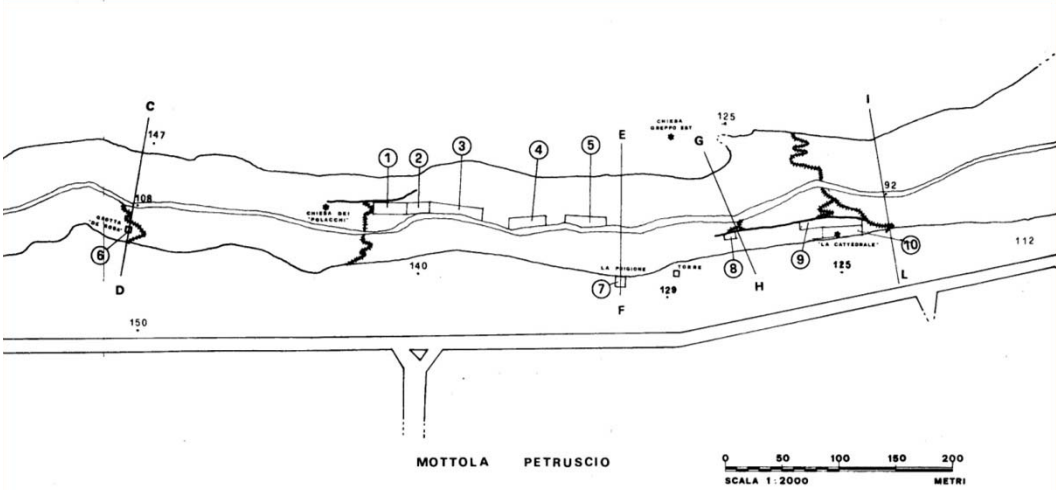
# Gli insediamenti rupestri. Lama d'antico.



# S. Nicola di Mottola.



# Petruscio.



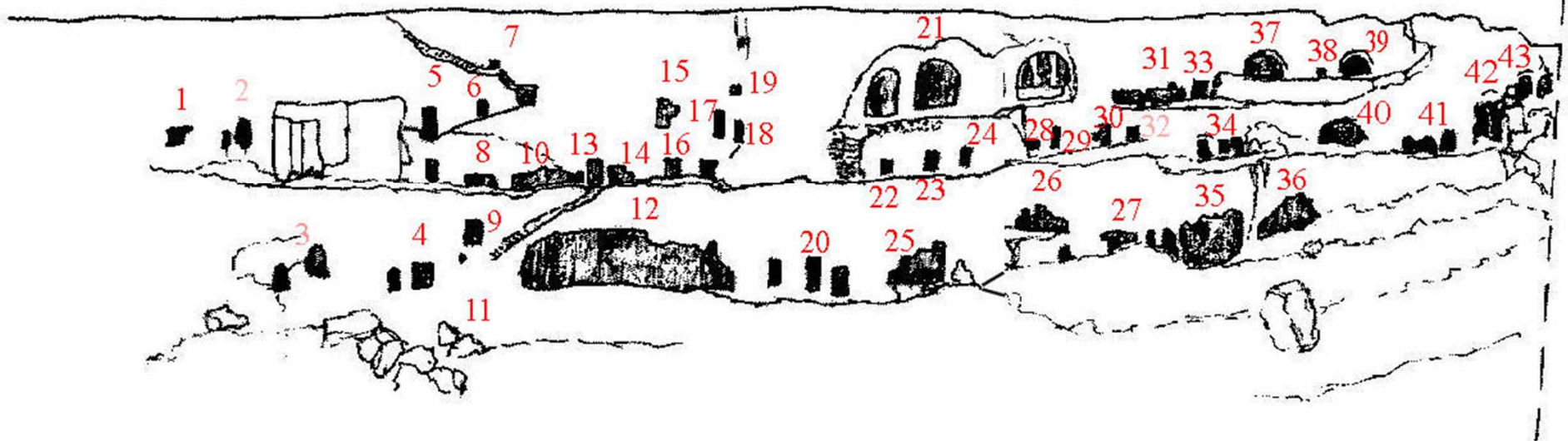
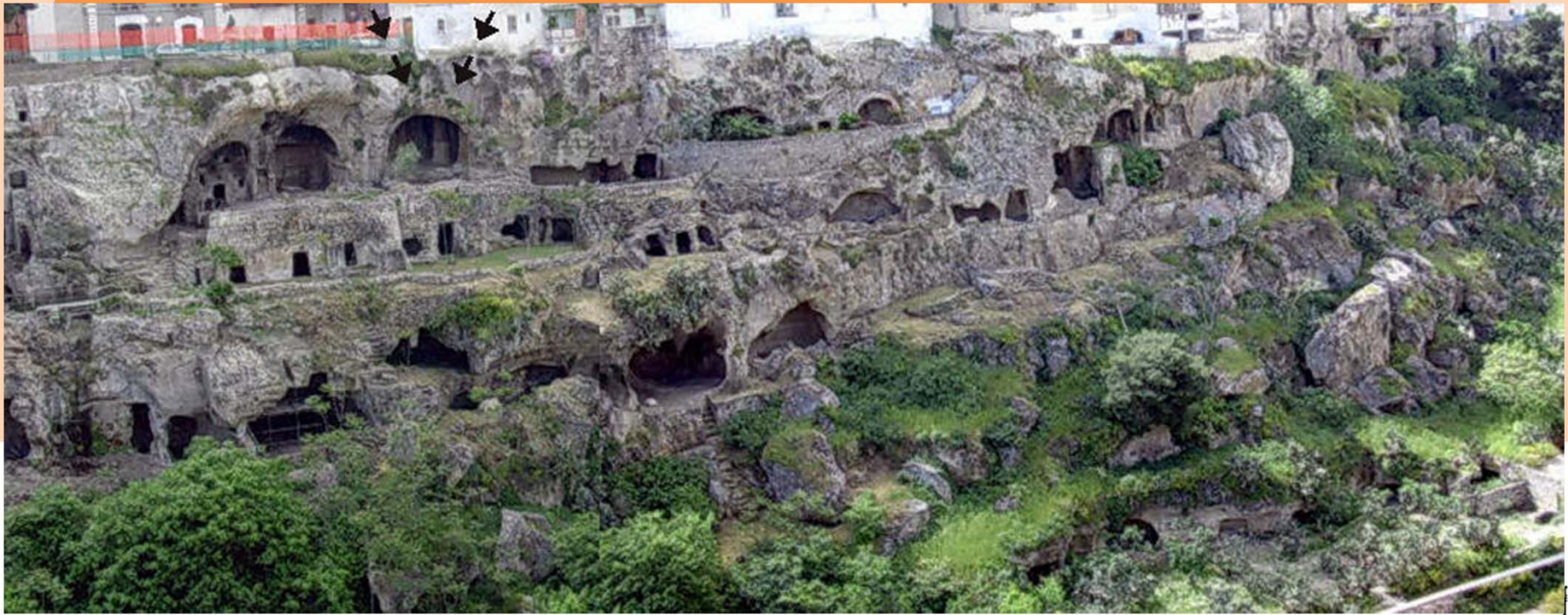


# Madonna della Scala a Massafra.





# S. Marco di Massafra.





# Cozzica di Matera.



# LA SALVAGUARDIA.

Conoscere per far conoscere.

Senza conoscenza non c'è valorizzazione.